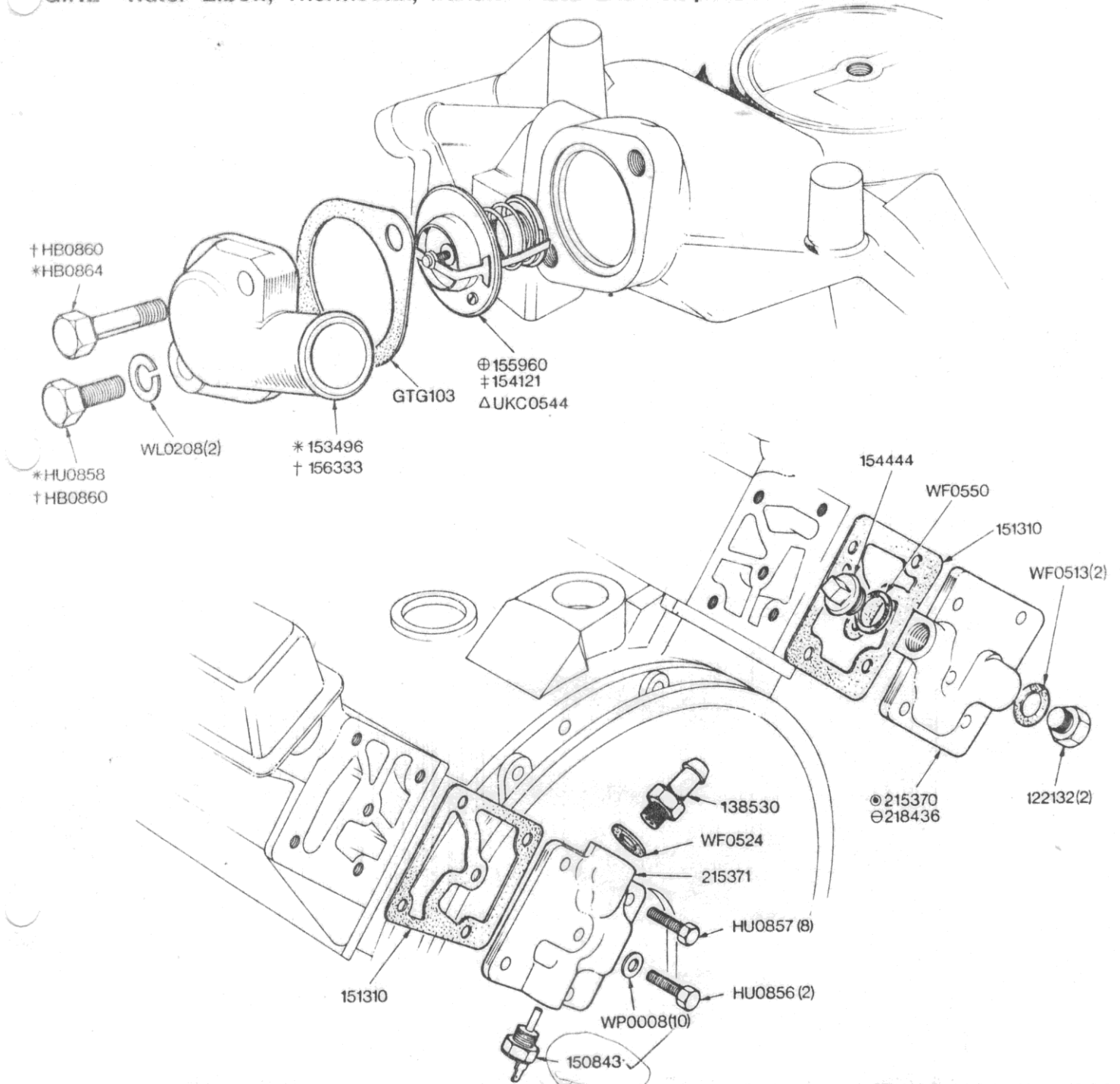


# ENGINE - Water Elbow, Thermostat, Transfer Plate and Temperature Transmitter



## NOTE

- \* Fitted up to Engine No. LE712E and LF311E only.
- † Fitted from Engine No. LE713E and LF312E and future.
- ⊕ Fitted up to Engine No. LE10,000E and LF11429E only.
- ‡ Fitted from Engine No. LE10,001E and LF11430E and up to LE20,881 and LF22050 only
- ⊙ Fitted up to Commission No. LF13344E only
- ⊖ Fitted from Commission No. LF13345E and future
- 154121 is fitted with Inlet Manifold 312506 only.
- Δ Fitted from Engine No. LE20882 and LF22051 and future.

# ENGINE

02-16 Water Elbow, Thermostat, Transfer Plate & Temperature Transmitter	Part No	
	Triumph	Rimmer Bros
Blanking plug	122132	122132
Hose adaptor	138530	138530
Thermal transmitter	150843	GTR108
Gasket	151310	151310
Water elbow - to LE712E & LF311E	153496	
Thermostat - from engine no LE10001 & LF11430 to LE20881 & LF22050	154121	
Plug	154444	154444
Thermostat - to engine no LE10000E & LF11429E	155960	
Water elbow - from LE713E & LF312E	156333	156333
Water transfer housing - RH to LF13344E	215370	
Water transfer housing - LH	215371	215371
Water transfer housing - RH from LF13344E	218436	218436
Gasket	GTG103	GTG103
Bolt - from engine no LE713E & LF312E	HB0860	
Bolt - to engine no LE712E & LF311E	HB0864	
Setscrew - hex head	HU0856	SH505061
Setscrew - hex head	HU0857	HU857
Setscrew - hex head, to engine no LE712E & LF311E	HU0858	
Thermostat - from engine no LE20882 & LF22051	UKC0544	
Washer - fibre	WF0513	WF513
Washer - fibre	WF0524	WF528
Washer - fibre	WF0550	WF550
Washer - lock	WL0208	GHF332
Washer - plain	WP0008	GHF301
Bolt		BH505111
Bolt		SH505101
Thermostat - 82° (standard)		GTS101
Thermostat - 74° (hot climate)		GTS103
Thermostat - 88° (cold climate)		GTS108