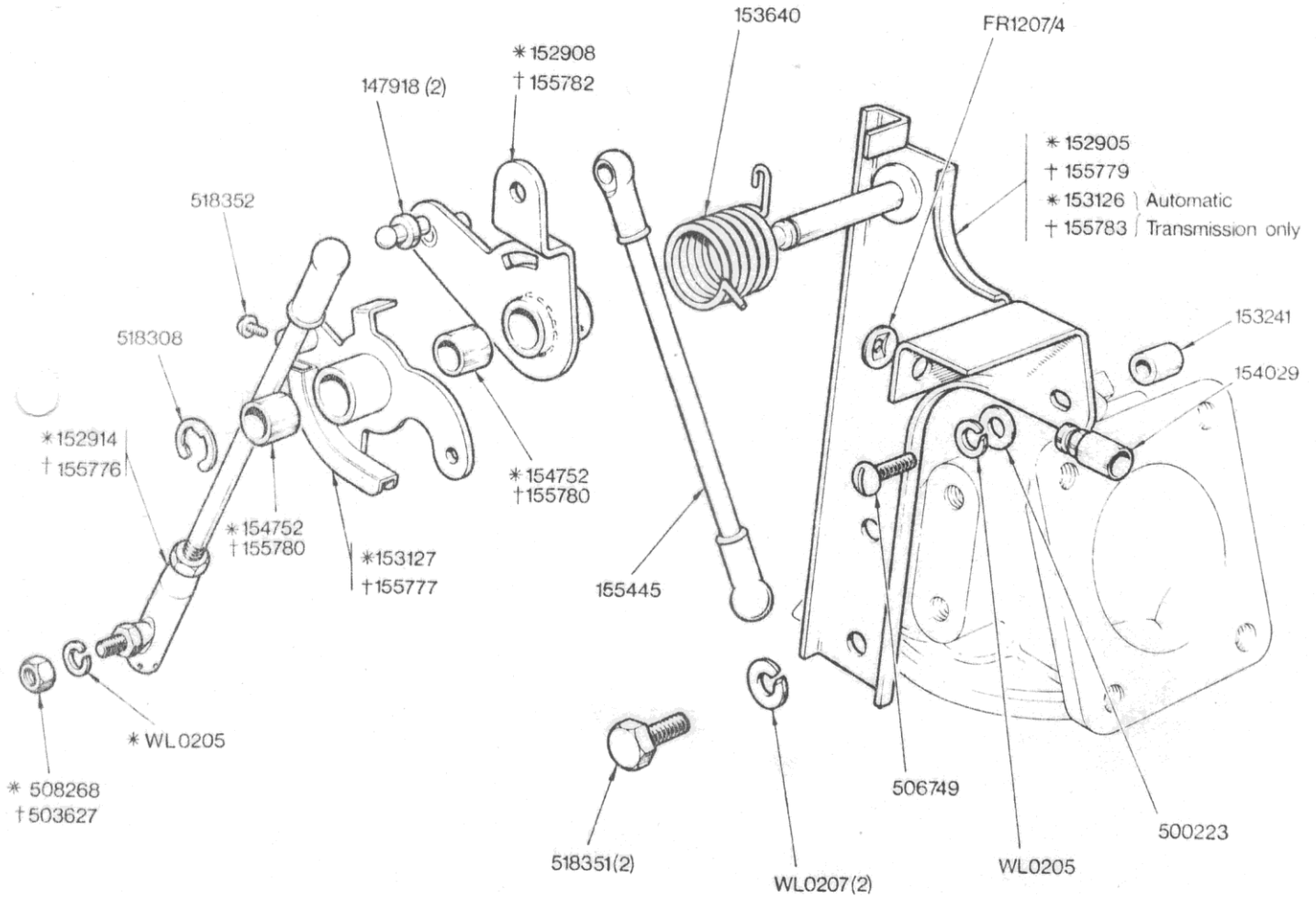


ENGINE - Carburettor Linkage



NOTE

If fitted in sets the latest details may be used for all replacements

* Fitted up to Engine No

LF1678E	Normal Transmission
⊙ LE924E	
LF1621E	Automatic Transmission
⊙ LE917E	

† Fitted from Engine No and future.

LF1679E	Normal Transmission
⊙ LE925E	
LF1622E	Automatic Transmission
⊙ LE918E	

⊙ USA only

ENGINE

02-22 Carburettor Linkage	Part No	
	Triumph	Rimmer Bros
Ball joint	147918	147918
Mounting bracket assembly - to engine no LF1678E/LE924E (manual)	152905	152905
Operating lever assembly - to engine no LF1678E/LE924E (manual) & LF1621E/LE917E (automatic)	152908	152908
Link rod assembly - LH, to engine no LF1678E/LE924E (manual) & LF1621E/LE917E (automatic)	152914	152914
Mounting bracket assembly - to engine no LF1621E/LE917E (automatic)	153126	153126
Operating lever - to engine no LF1678E/LE924E (manual) & LF1621E/LE917E (automatic)	153127	153127
Spacer	153241	153241
Return spring	153640	153640
Abutment	154029	154029
Bearing	154752	154752
Link rod assembly - RH	155445	155445
Link rod assembly - LH, from engine no LF1679E/LE925E (manual) & LF1622E/LE918E (automatic)	155776	155776
Operating lever - from engine no LF1679E/LE925E (manual) & LF1622E/LE918E (automatic)	155777	155777
Mounting bracket assembly - from engine no LF1679E/LE925E (manual)	155779	155779
Bearing	155780	155780
Operating lever assembly - from engine no LF1679E/LE925E (manual)& LF1622E/LE918E (automatic)	155782	155782
Mounting bracket assembly - from engine no LF1622E/LE918E (automatic)	155783	155783
Washer	500223	500223
Nut - from engine no LF1679E/LE925E (manual) & LF1622E/LE918E (automatic)	503627	UCN116L
Setscrew	506749	506749
Nut - to engine no LF1678E/LE924E (manual) & LF1621E/LE917E (automatic)	508268	508268
Setscrew	518351	518351
Setscrew	518352	518352
Fix nut	FR1207/4	
Washer - lock	WL0205	WL205
Washer - lock	WL0207	GHF331