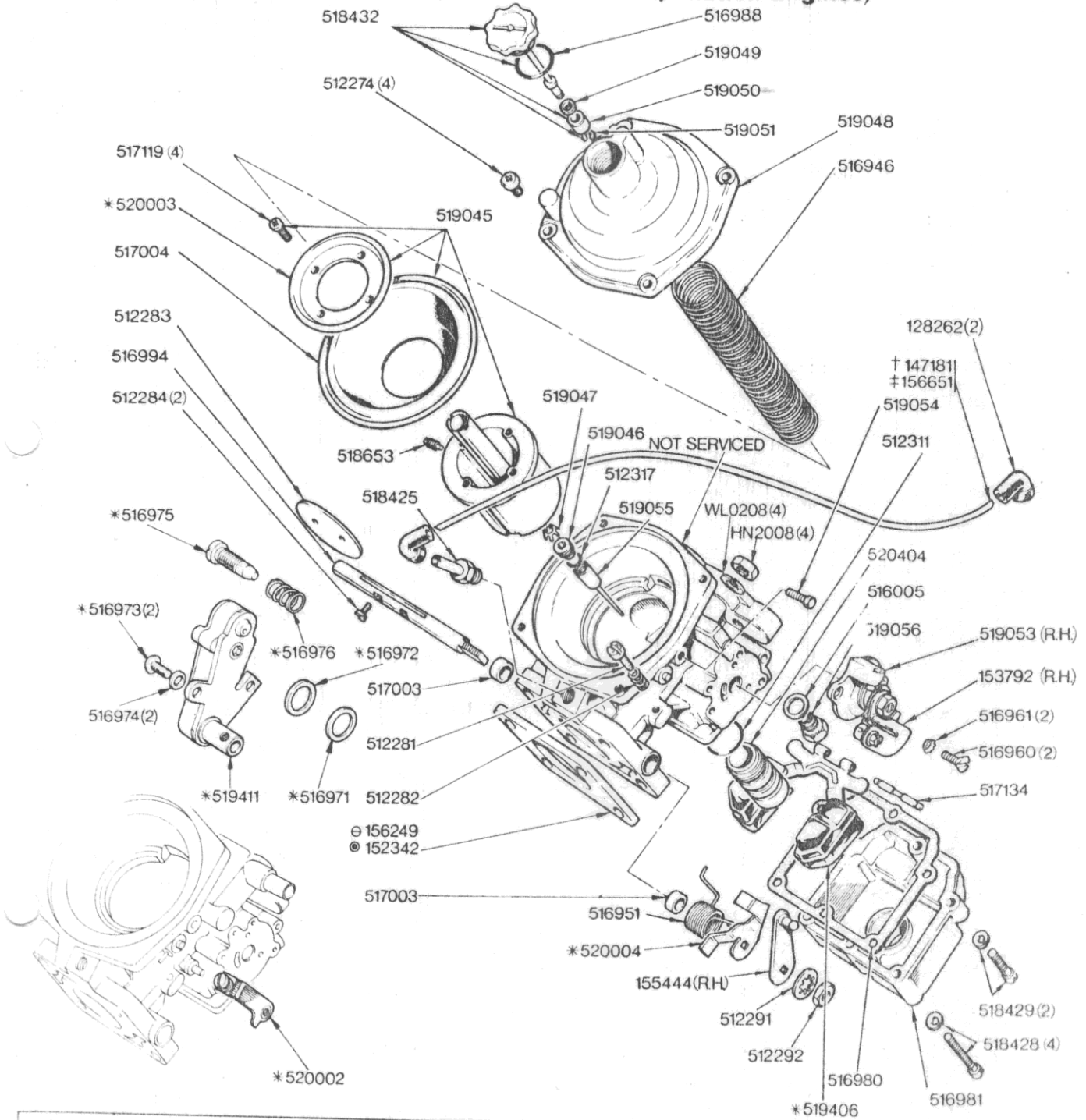


ENGINE - Carburettor Details R.H. (not fitted to Anti-pollution Engines)



NOTE

311216 Carburettor Assembly R.H. (Fitted up to Commission No. LF2538 only)

311968 Carburettor Assembly R.H. (Fitted from Commission No. LF2539 and up to LD 30,002 only)

RKC 0823 Carburettor Assembly R.H. (Fitted from Commission No. LD 30,003 and future)

Items marked thus * to be used with 311968 and 311969

+ Fitted up to Commission No. LE 751 and LF 1329 only

‡ Fitted from Commission No. LE 752 and LF 1330 and future

⊕ Fitted up to Engine No. LF 20,000E only

⊖ Fitted from Engine No. LF 20,001E and future

ENGINE

02-23 Carburettor Details RH (not fitted to Anti-pollution engines)	Part No	
	Triumph	Rimmer Bros
Gasket - to engine LF20000E	152342	
Choke lever	153792	
Throttle lever	155444	
Gasket - from engine LF20001E	156249	
Carburettor assembly - RH, to commission no LF2538	311216	
Carburettor assembly - RH, from commission no LF2539 to LD30002	311968	
Screw & spring washer	512274	605847A
Screw	512281	512281
Spring	512282	512282
Throttle	512283	605800
Screw	512284	605801
Washer - shakeproof	512291	GHF322
Nut	512292	512292
O-Ring	512311	512311
O-ring	512317	512317
Washer	516005	
Spring	516946	516946
Spring	516951	516951
Screw	516960	516960
Washer - shakeproof	516961	516961
Washer - use with 311968 & 311969	516971	516971
Washer - use with 311968 & 311969	516972	516972
Washer - use with 311968 & 311969	516974	516974
Screw - use with 311968 & 311969	516975	
Spring - use with 311968 & 311969	516976	
Gasket	516980	12882A
Float chamber	516981	
Damper O-ring	516988	516988
Spindle	516994	516994
Seal	517003	
Diaphragm	517004	JS499A
Screw	517119	517119
Float pivot pin	517134	606819A
Setscrew & washer - lock	518428	605837
Setscrew & washer - lock	518429	605838
Damper assembly	518432	518432
Retaining screw	518653	518653
Air valve shaft & diaphragm assembly	519045	
Adjuster screw	519046	
Retaining washer	519047	
Air valve cover	519048	
Damper washer	519049	
Damper bushing	519050	
Retaining ring	519051	
Starter assembly	519053	519053
Screw	519054	
Metering needle	519055	519055
Needle valve	519056	AAU4547

ENGINE

02-23 Carburettor Details RH (not fitted to Anti-pollution engines) continued	Part No	
	Triumph	Rimmer Bros
Float & arm - use with 311968 & 311969	519406	605833A
Temperature compensator - use with 311968 & 311969	519411	519411
Vent lever & adjusting screw assembly - use with 311968 & 311969	520002	
Retaining ring	520003	
Throttle stop - use with 311968 & 311969	520004	520004
Float chamber sealing plug	520404	520404
Nut	HN2008	GHF201
Carburettor assembly - RH, from commission no LD30003	RKC0823	
Washer - lock	WL0208	GHF332