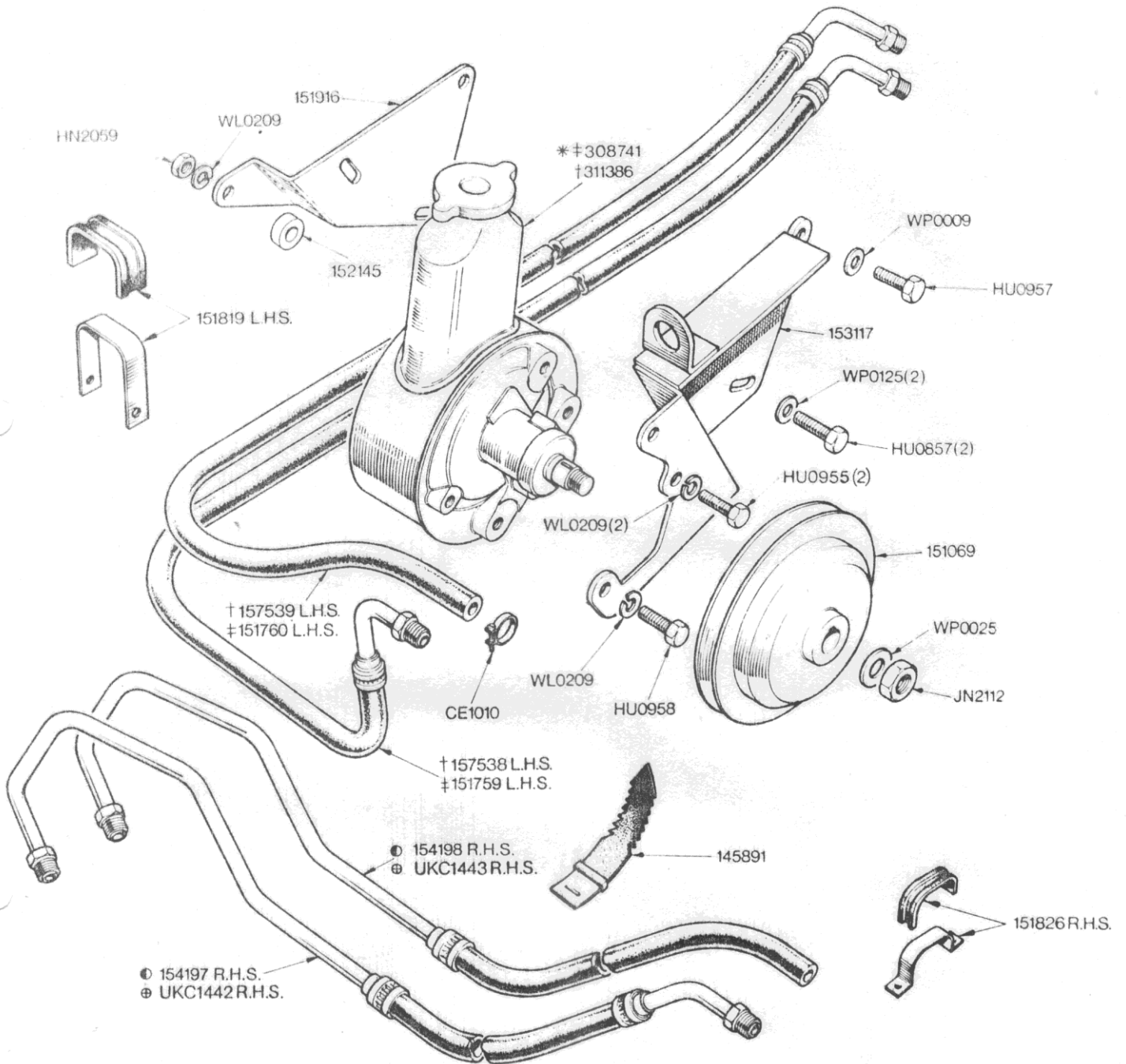


STEERING—Hydraulic pump and pipes



NOTE

- * For breakdown details see 02 -57
- ‡ Fitted up to Engine No LF584E only
- † Fitted from Engine No LF585E and future
- Fitted up to Engine No. only
- ⊕ Fitted from Engine No. and future

STEERING

02-56 Hydraulic Pump & Pipes	Part No	
	Triumph	Rimmer Bros
Fir tree clip - RHS	145891	240431A
Pulley - Woodruff key type to engine no LF41969	151069	151069
High pressure hose - LHS, to engine no LF584E	151759	
Low pressure hose - LHS, to engine no LF584E	151760	
Clip - LHS	151819	151819
Clip - RHS	151826	151826
Rear mounting bracket assembly	151916	151916
Packing piece	152145	152145
Front mounting bracket assembly	153117	153117
High pressure hose - RHS, to engine no ?	154197	
Low pressure hose - RHS, to engine no ?	154198	
High pressure hose - LHS, from engine no LF585E	157538	157538
Low pressure hose - LHS, from engine no LF585E	157539	157539
Hydraulic Steering pump - to engine no LF584E	308741	
Hydraulic Steering pump - from engine no LF585E	311386	
Hose clip	CE1010	
Nut	HN2059	GHF209
Setscrew	HU0857	HU857
Setscrew	HU0955	SH506101
Setscrew	HU0957	HU957
Setscrew	HU0958	SH506101
Nut - jam	JN2112	NT609041
High pressure hose - RHS, from engine no ?	UKC1442	UKC1442
Low pressure hose - RHS, from engine no ?	UKC1443	UKC1443
Washer - lock	WL0209	GHF333
Washer - plain, light	WP0009	GHF302
Washer - plain, light	WP0025	WP12
Washer - plain, light	WP0125	WP125
Washer - plain, light	WP0025	WP12
Pulley - Press-on type from LF41700		RS1112