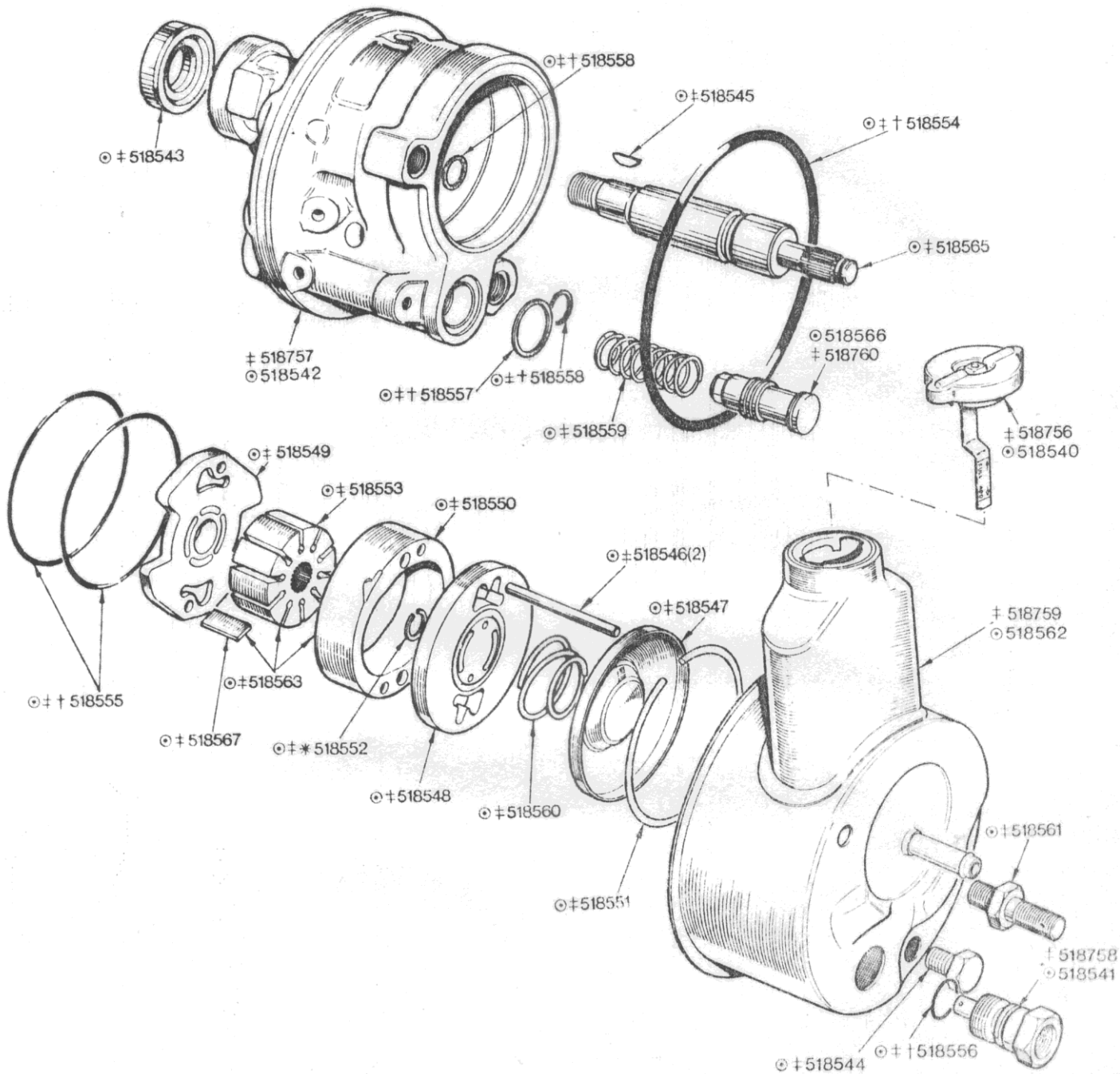


# EERING - Hydraulic Pump Details



**NOTE**

- 308741 HYDRAULIC PUMP ASSEMBLY 1off Fitted up to Engine No. LF584E only  
(Comprising all items marked ⊙)
- 31386 HYDRAULIC PUMP ASSEMBLY 1off Fitted from Engine No. LF585E and future  
(Comprising all items marked †)
- \*Part of DRIVE SHAFT KIT Part No.518565
- † Items marked thus are part of SEALS SERVICE KIT Part No. 518564

# STEERING

02-57 Hydraulic Pump Details	Part No	
	Triumph	Rimmer Bros
Reservoir cap - to engine no LF584E	518540	
Venturi & union fitting assembly - to engine no LF584E	518541	
Hydraulic Steering pump housing assembly - to engine no LF584E	518542	
Drive shaft seal	518543	
Bolt	518544	
Woodruff key	518545	
Pump body ring dowel	518546	
End plate	518547	
Pressure plate	518548	
Pressure plate	518549	
Pump body ring	518550	
Retaining ring	518551	
Ring retaining shaft	518552	
Rotor	518553	
O-ring	518554	
O-ring	518555	
O-ring	518556	
O-ring	518557	
O-ring	518558	
Flow control spring	518559	
Pressure plate spring	518560	
Pump mounting stud	518561	
Reservoir assembly - to engine no LF584E	518562	
Rotor, vane & ring service kit	518563	
Drive shaft	518565	
Flow control valve assembly - to engine no LF584E	518566	
Vane service kit	518567	
Reservoir cap - from engine no LF585E	518756	
Hydraulic Steering pump housing assembly - from engine no LF585E	518757	
Venturi & union fitting assembly - from engine no LF585E	518758	
Reservoir assembly - from engine no LF585E	518759	
Flow control valve assembly - from engine no LF585E	518760	