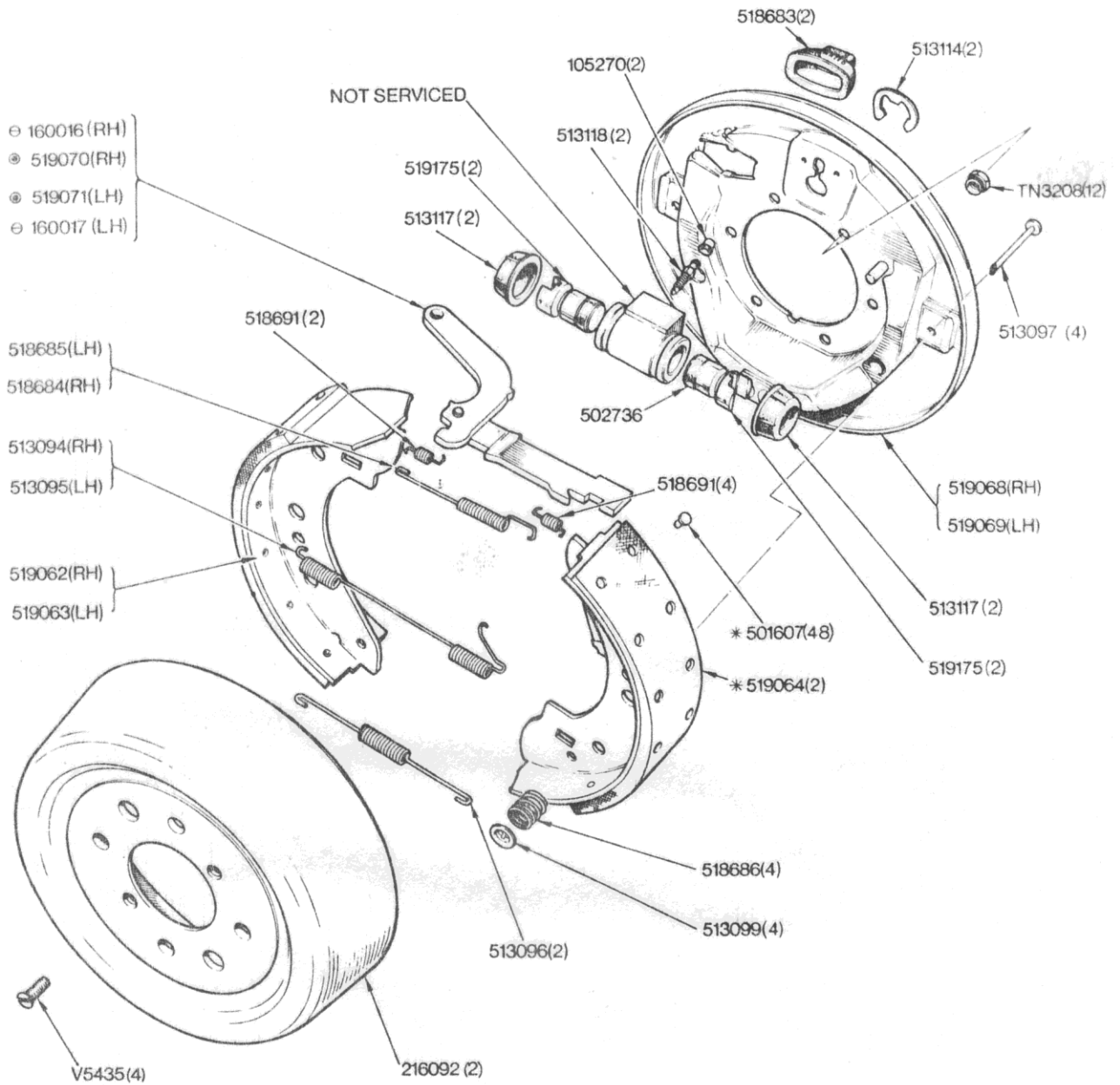


WAKES-Rear Drum



NOTE:

- 309126 REAR BRAKE ASSEMBLY R.H.
- 309125 REAR BRAKE ASSEMBLY L.H.
- 519174 REAR WHEEL CYLINDER ASSEMBLY
- 519059 SERVICE KIT (for rear wheel cylinder)

Items marked thus * are export only

⊙ Fitted up to Commission No. only
 e Fitted from Commission No. and future

BRAKES

02-67 Rear Drum Brakes	Part No	
	Triumph	Rimmer Bros
Rear wheel cylinder plug	105270	
Handbrake operating lever assembly - RH, from commission no ?	160016	
Handbrake operating lever assembly - LH, from commission no ?	160017	
Brake drum	216092	216092
Rear brake assembly - LH	309125	
Rear brake assembly - RH	309126	
Rivet	501607	
Rear wheel cylinder taper seal	502736	
Spring - RH	513094	AAU2210
Spring - LH	513095	AAU2210
Spring	513096	AAU6247
Steady pin	513097	17H2215
Steady pin washer	513099	27H8426
E-clip	513114	17H7949
Rear wheel cylinder boot	513117	
Rear wheel cylinder screw	513118	
Wheel cylinder boot	518683	17H8057
Handbrake lever spring - RH	518684	AAU6242
Handbrake lever spring - LH	518685	AAU6241
Steady pin spring	518686	606747A
Spring	518691	
Rear wheel cylinder service kit	519059	519059
Brake shoe pack - RH	519062	
Brake shoe pack - LH	519063	
Rear brake linings	519064	
Rear brake back plate - RH	519068	519068
Rear brake back plate - LH	519069	519069
Handbrake operating lever assembly - RH, to commission no ?	519070	519070
Handbrake operating lever assembly - LH, to commission no ?	519071	519071
Rear wheel cylinder	519174	GWC1211
Rear wheel cylinder piston	519175	
Nut - nyloc	TN3208	GHF272
Drum retaining screw	V5435	V5435
Brake shoe set		GBS804
Rear wheel cylinder to backplate gasket		37H4642
Rear wheel cylinder bleed nipple		556508A