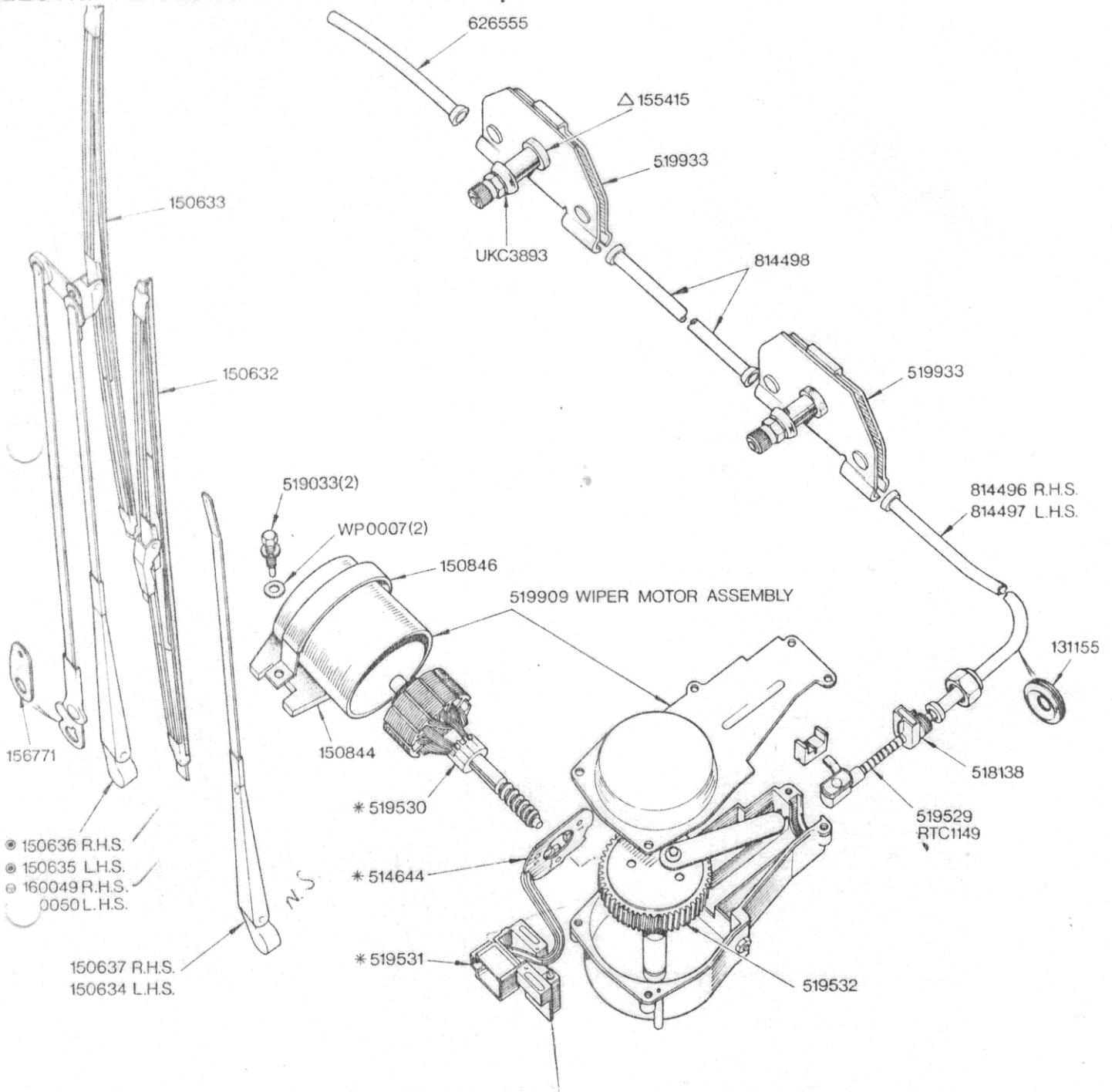


# ELECTRICAL EQUIPMENT - Windscreen Wiper



Parts marked thus \* are part of WIPER MOTOR ASSEMBLY 519909

519934 Bush Kit, wheelbox, driver's side 1off

520001 Bush Kit, wheelbox, passenger's side 1off

△155415 Part of Kit 519934

⊙ Fitted up to Body No T20,000 LD only

⊖ Fitted from Body No T20,001 LD and future

# ELECTRICAL EQUIPMENT

03-10 Windscreen Wiper	Part No		
	Triumph	Lucas	Rimmer Bros
Grommet	131155		600395
Windscreen wiper blade - passenger's side	150632	54701324	GWB197
Windscreen wiper blade - driver's side	150633	54703746	GWB232
Windscreen wiper arm - passenger's side, LHS	150634	54703810	150634
Windscreen wiper arm - LHS driver's side, to body no T2000LD	150635		
Windscreen wiper arm - RHS driver's side, to body no T2000LD	150636		
Windscreen wiper arm - passenger's side, RHS	150637	54703747	150637
Pad fixing rubber	150844		
Strap & sleeve assembly	150846		BHA4790
Wheelbox rear bush	155415		
Washer wheelbox	156771		156746
Windscreen wiper arm - RHS driver's side, from body no T2000LD	160049	54703744	160049
Windscreen wiper arm - LHS driver's side, from body no T2000LD	160050	54703745	160050
Windscreen wiper motor brush assembly	514644	54701528	517644A
Ferrule	518138		37H3694
Setscrew	519033		519033
Windscreen wiper rack assembly (50 29/32" length)	519529	54701536	RTC1149
Wiper motor armature	519530		
Windscreen wiper motor parking switch	519531	54701577	12453A
Windscreen wiper motor gear assembly	519532	54705366	519532
Windscreen wiper motor assembly	519909	75716E (75721 & 54705366)	AEU1607
Wheelbox assembly - RHS	519933	72837D (72866 & 54706131)	37H7084
Tubing - extension	626555	54702605	575047A
Tubing - wiper motor to wheelbox, RHS	814496	54703658	AAU1909A
Tubing - wiper motor to wheelbox, LHS	814497	54703659	
Tubing - wheelbox to wheelbox	814498	54703660	814498
Windscreen wiper rack assembly (50 29/32" length)	RTC1149	54701536	RTC1149
Washer - wiper rack	UKC3893		
Washer - plain, light	WP0007		WC701121